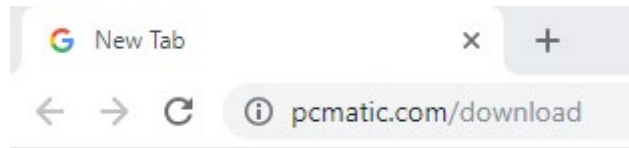


# Installing PC Matic on Windows

Follow the instructions below to add a Windows device to a PC Matic account.

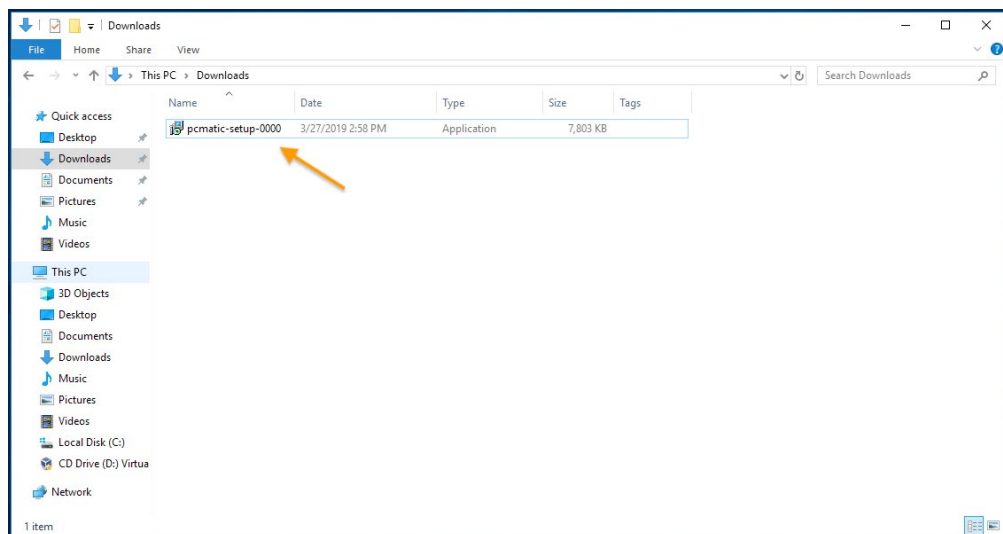
1. On the computer you wish to install on, open your web browser (Chrome, Firefox, Edge, etc.)
2. Type [www.pcmatic.com/download](http://www.pcmatic.com/download) into the address bar and press enter (screenshot below).



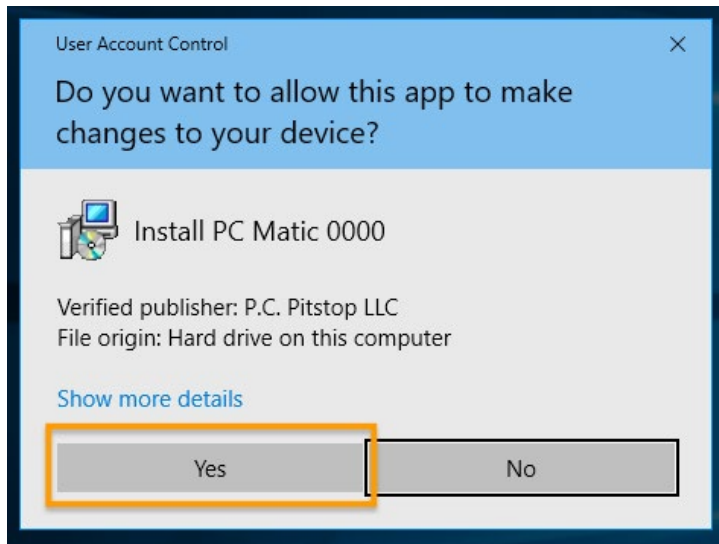
3. The installer file will automatically download. You may see it in the lower left corner of your browser (Chrome), or you can find it in your Downloads folder (screenshot below).



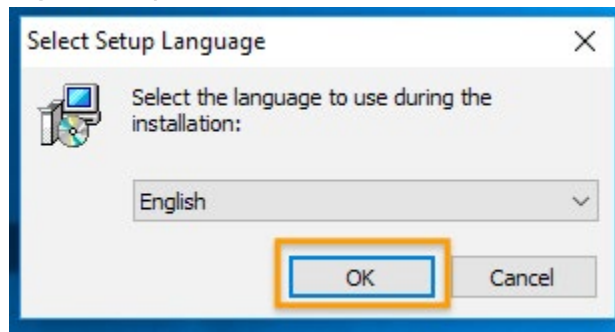
4. Double click on the installation file, or click it once and press enter (screenshot below).



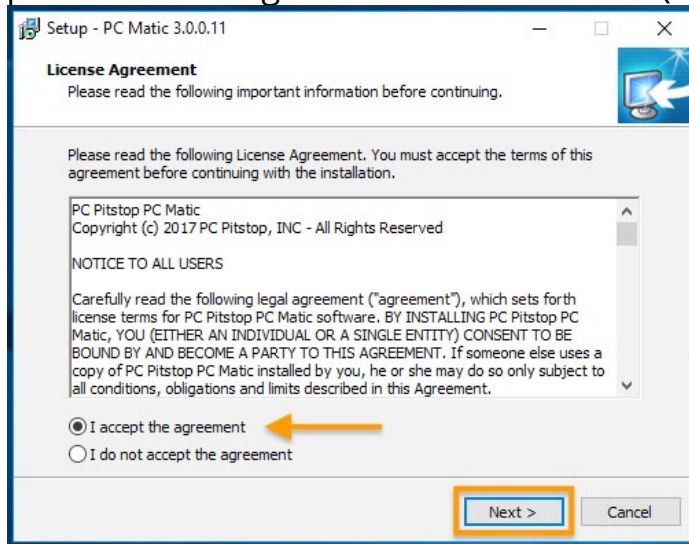
5. If prompted with User Account Control, click Yes (screenshot below).



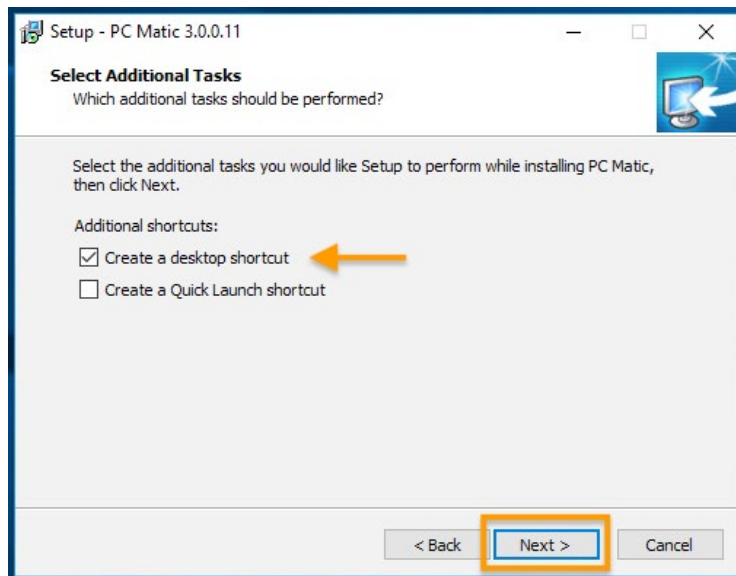
6. Select your language and press OK (screenshot below).



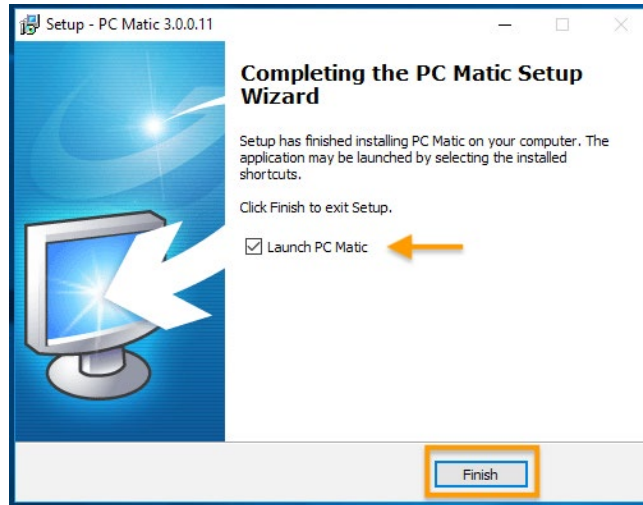
7. Read and accept the License Agreement and click Next (screenshot below).



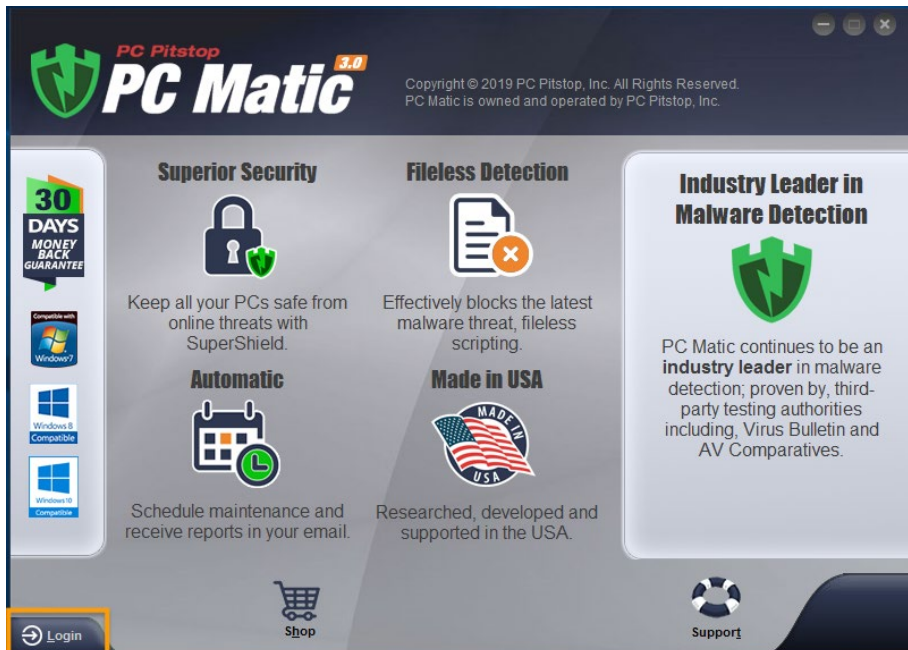
8. Click Next to confirm the install location.
9. Click Next to confirm the start menu location.
10. Select if you want to create a desktop shortcut and click Next (screenshot below).



11. Select Install.
12. Once complete, select to Launch PC Matic and click Finish (screenshot below).



13. When PC Matic launches, click Login in the lower left corner (screenshot below).



14. Enter your PC Matic account email address and password and click Login (screenshot below).

**PC Pitstop** 3.0

### LOGIN TO PC MATIC

Your PC Pitstop login is an all-access pass to both paid products and free services on our site; it lets you view test results on all your PCs. If you don't have an account yet, you can create one now or you can just run the free scan and create an account later.

#### Login

Email

Password

[Login](#)

[Forgot Password?](#)

[I Do Not Have A PC Matic Account](#)

30 DAYS MONEY BACK GUARANTEE

Compatible with Windows 7, Windows 8 Compatible, Windows 10 Compatible

Login Shop Support

15. You've completed installing PC Matic!