

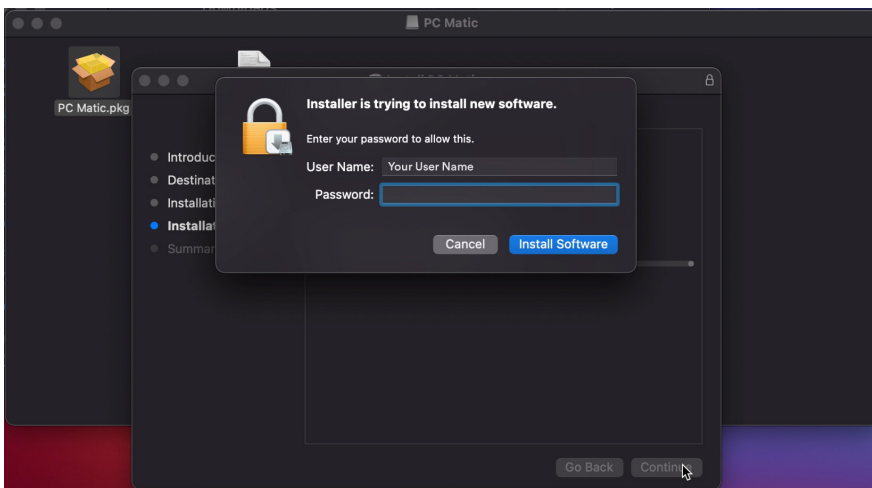
Installing PC Matic on Mac

Follow the instructions below to add a Mac device to a PC Matic account.

1. Click on the Download button to download PC Matic Mac.
2. To complete the install process, you will need to know the administrator password for the computer. This is most likely the password you use to login to your Mac on a daily basis.
3. Navigate to where you downloaded and/or saved the .dmg installer file.
4. Double click the InstallPCMatic.dmg file to begin the install process.
5. Once you double click the InstallPCMatic.dmg file it will open a new window called PC Matic with two files inside (screenshot below):



- PC Matic.pkg - This is our main installer file and what we'll use to put PC Matic in place.
 - Uninstall PC Matic.tool - This uninstall file is not used for Catalina & Big Sur. To remove PC Matic click the shield, hover over Troubleshooting/Help and select uninstall.
6. Double click the PC Matic.pkg file to continue with the install, click Continue, then click Install.



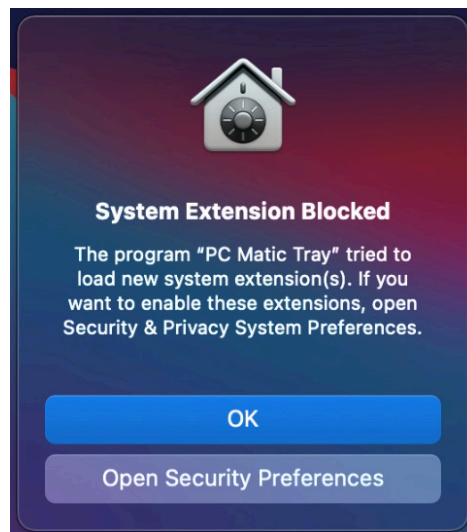
7. Type in your administrator password and click Install Software (screenshot below).
8. You should now see our PC Matic Mac icon appear in the Status Bar at the top of



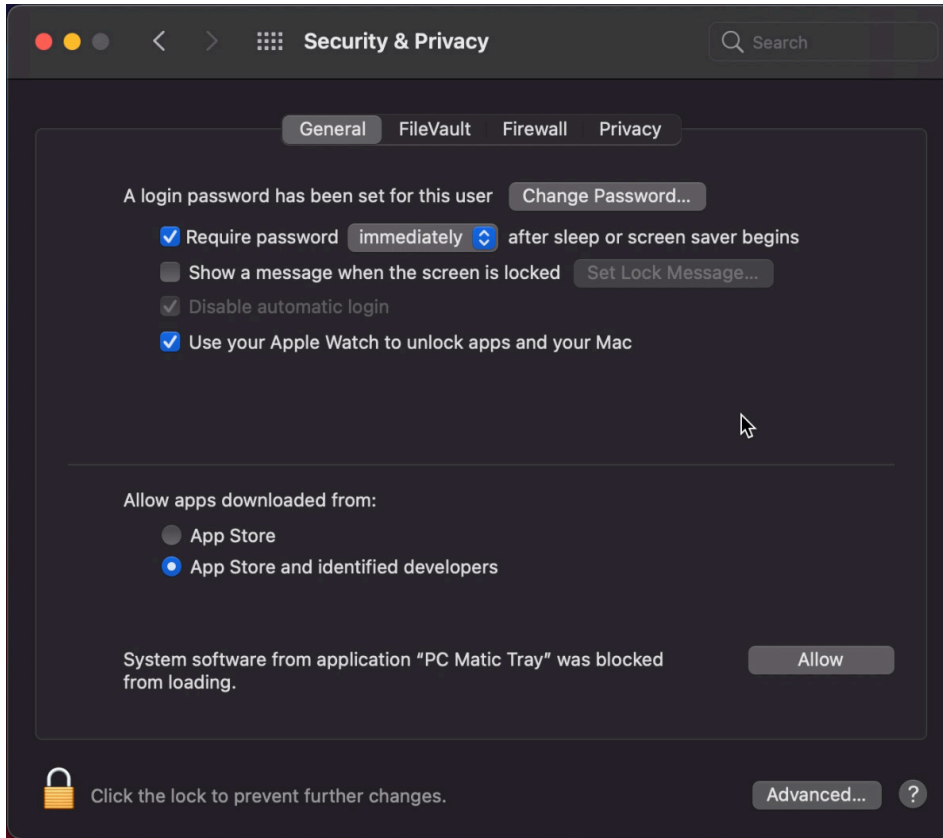
your desktop. It will begin as a red shield (screenshot below).

9. Click the red shield, and select 'Register this computer' to connect this Mac with your PC Matic account.

10. Sign in with your PC Matic account information (screenshot below).
11. Once signed in, your Mac will prompt you to allow our system extension and full disk access. This is critical for antivirus products and must be allowed for PC Matic



- to protect your device. Click Open Security Preferences in the prompt.
12. In the Security and Privacy window at the bottom you will see “System Software from Application “PC Matic Tray” was blocked from loading”. Unlock the window by clicking the lock in the lower left corner and entering your administrator



- password. Then click the allow button.
13. After you click allow, the option will disappear.
 14. Next, click Privacy at the top of the window. It is the last tab on the right. Scroll down on the left side and select Full Disk Access.



15. Place a checkmark in the boxes next to “PC Matic” and “PC Matic System Extension”. Lock and close the Security & Privacy window.

16. Installation is Complete!